

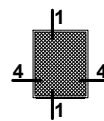
INTRO

Oznaczenie katalogowe systemu

Tytuł rysunku

MPH

Moskitiery - przykłady zabudowy

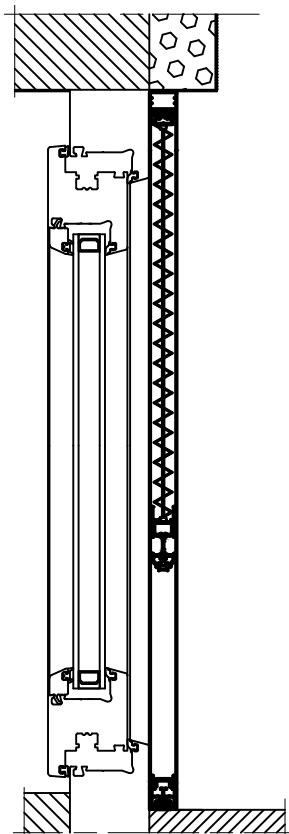


Piktogram (oznaczenie przekroju)

Skala 1:4

Skala rysunku

1 MPH - 01



Data aktualizacji

12/2018



MPH / 03

Numer strony

Numer przekroju (zgodny z piktogramem)

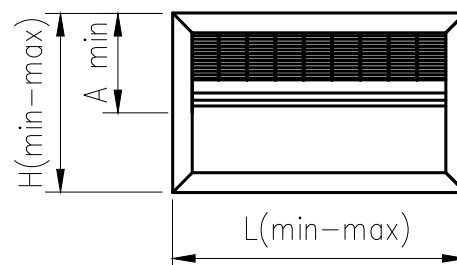
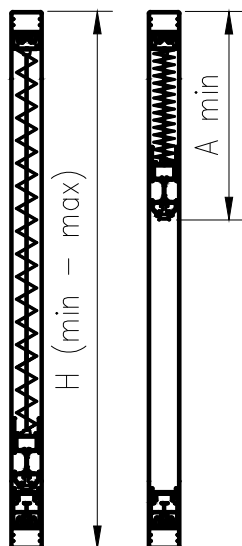
Wariant przekroju

1 MPH - 01

System

Maksymalne wymiary moskitier

MPH moskitiera plisowana pionowa



SETV MPH/2300/1100

Amin = 99 mm
 Hmin = 801 mm
 Hmax = 1100 mm
 L1min = 1760 mm
 L1max = 2300 mm
 L2min = 760 mm
 L2max = 1320 mm
 L3min = 760 mm
 L3max = 1220 mm

SETV MPH/1800/1300

Amin = 105 mm
 Hmin = 1101 mm
 Hmax = 1300 mm
 L1min = 1260 mm
 L1max = 1800 mm
 L2min = 760 mm
 L2max = 1320 mm

SETV MPH/1800/1800

Amin = 121 mm
 Hmin = 1501 mm
 Hmax = 1800 mm
 L1min = 1260 mm
 L1max = 1800 mm
 L2min = 760 mm
 L2max = 1320 mm

SETV MPH/1800/800

Amin = 90 mm
 Hmin = 600 mm
 Hmax = 800 mm
 L1min = 1260 mm
 L1max = 1800 mm
 L2min = 760 mm
 L2max = 1320 mm

SETV MPH/2300/1300

Amin = 105 mm
 Hmin = 1101 mm
 Hmax = 1300 mm
 L1min = 1760 mm
 L1max = 2300 mm
 L2min = 760 mm
 L2max = 1320 mm
 L3min = 760 mm
 L3max = 1220 mm

SETV MPH/2300/1800

Amin = 121 mm
 Hmin = 1501 mm
 Hmax = 1800 mm
 L1min = 1760 mm
 L1max = 2300 mm
 L2min = 760 mm
 L2max = 1320 mm
 L3min = 760 mm
 L3max = 1220 mm

SETV MPH/2300/800

Amin = 90 mm
 Hmin = 600 mm
 Hmax = 800 mm
 L1min = 1760 mm
 L1max = 2300 mm
 L2min = 760 mm
 L2max = 1320 mm
 L3min = 760 mm
 L3max = 1220 mm

SETV MPH/1800/1500

Amin = 112 mm
 Hmin = 1301 mm
 Hmax = 1500 mm
 L1min = 1260 mm
 L1max = 1800 mm
 L2min = 760 mm
 L2max = 1320 mm

SETV MPH/1800/2000

Amin = 128 mm
 Hmin = 1801 mm
 Hmax = 2000 mm
 L1min = 1260 mm
 L1max = 1800 mm
 L2min = 760 mm
 L2max = 1320 mm

SETV MPH/1800/1100

Amin = 99 mm
 Hmin = 801 mm
 Hmax = 1100 mm
 L1min = 1260 mm
 L1max = 1800 mm
 L2min = 760 mm
 L2max = 1320 mm

SETV MPH/2300/1500

Amin = 112 mm
 Hmin = 1301 mm
 Hmax = 1500 mm
 L1min = 1760 mm
 L1max = 2300 mm
 L2min = 760 mm
 L2max = 1320 mm
 L3min = 760 mm
 L3max = 1220 mm

SETV MPH/2300/2000

Amin = 128 mm
 Hmin = 1801 mm
 Hmax = 2000 mm
 L1min = 1760 mm
 L1max = 2300 mm
 L2min = 760 mm
 L2max = 1320 mm
 L3min = 760 mm
 L3max = 1220 mm

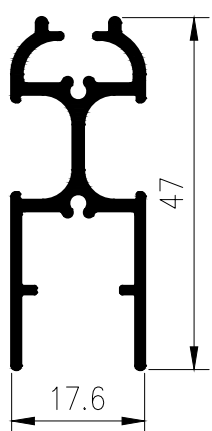
MPH

Profile moskitier

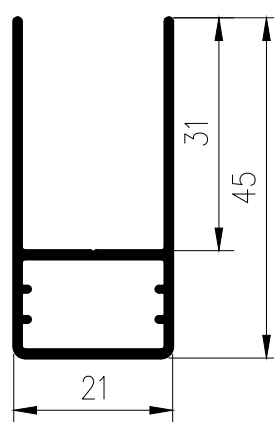
MPH moskitiera plisowana pionowa

Skala 1:1

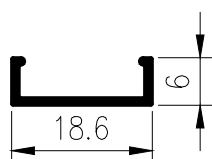
PPR/B MPH



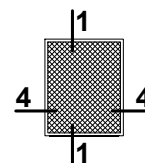
PP MPH



PD MPH

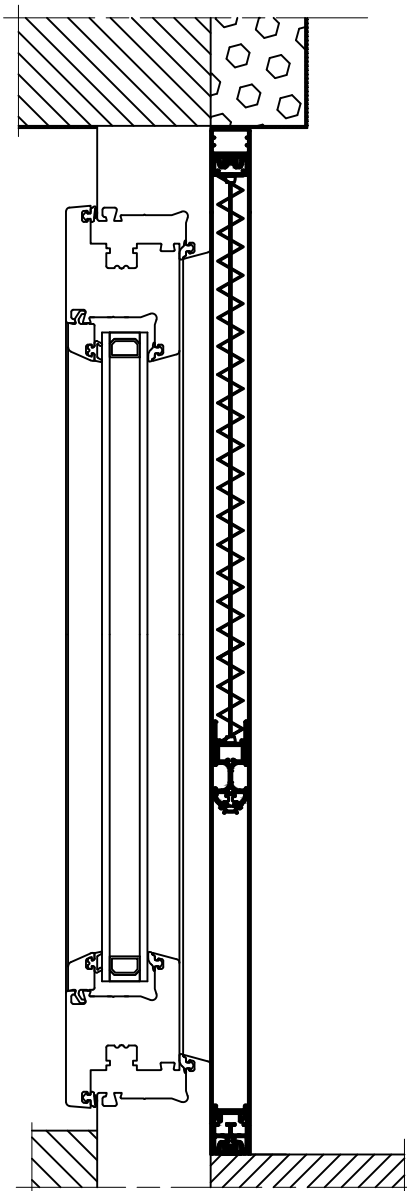


Moskitiery - przykłady zabudowy

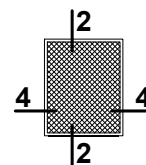


Skala 1:4

1 MPH-01

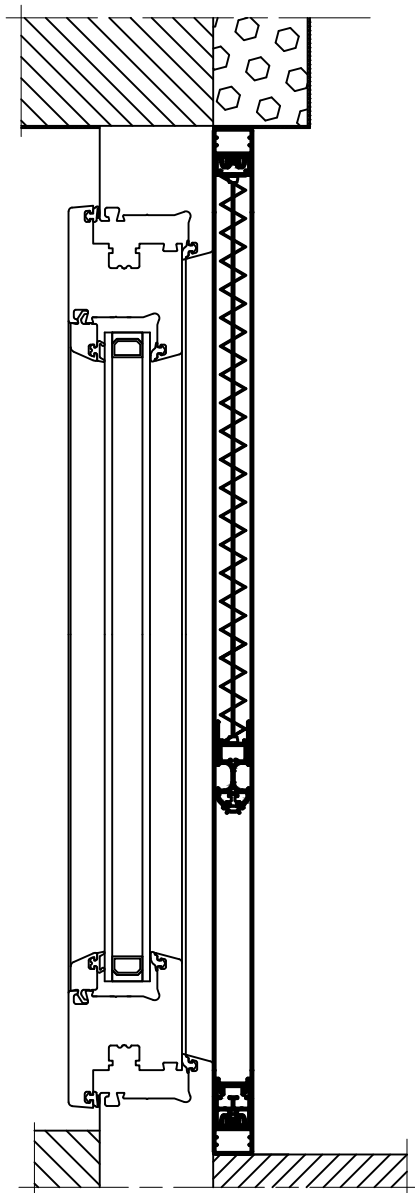


Moskitiery - przykłady zabudowy

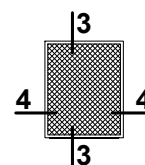


Skala 1:4

2 MPH - 02

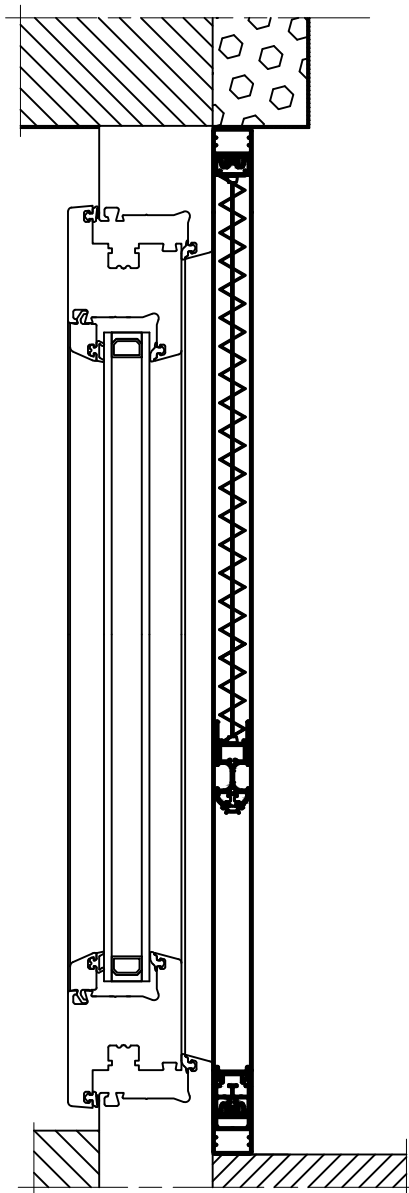


Moskitiery - przykłady zabudowy

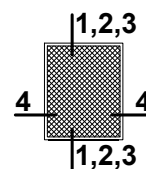


Skala 1:4

3 MPH - 03

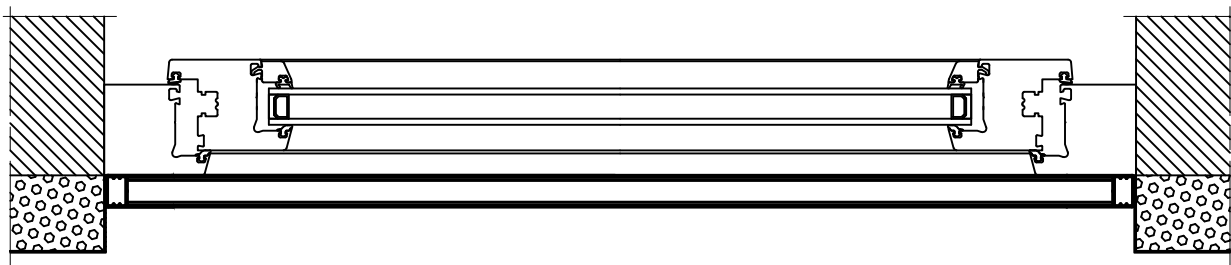


Moskitiery - przykłady zabudowy

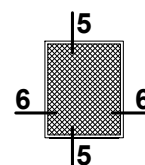


Skala 1:5

4 MPH - 01,02,03

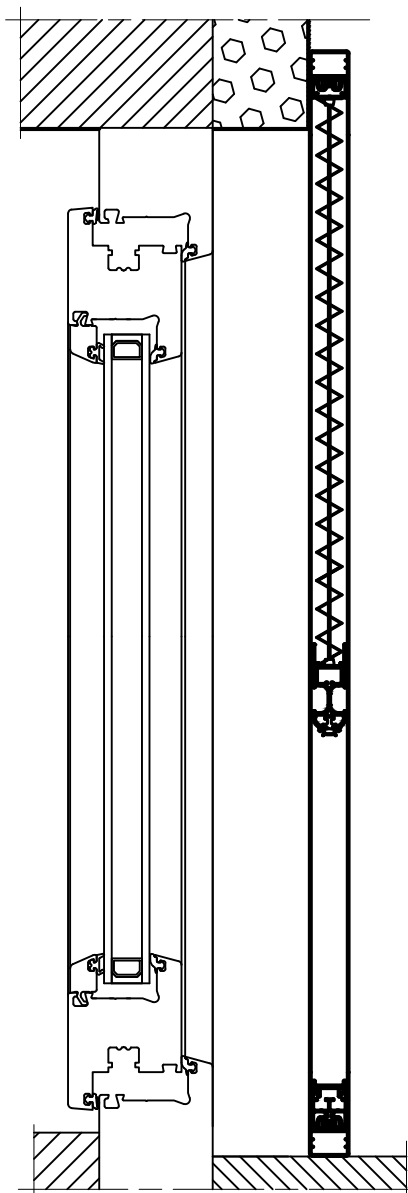


Moskitiery - przykłady zabudowy

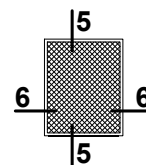


Skala 1:4

5 MPH - 04

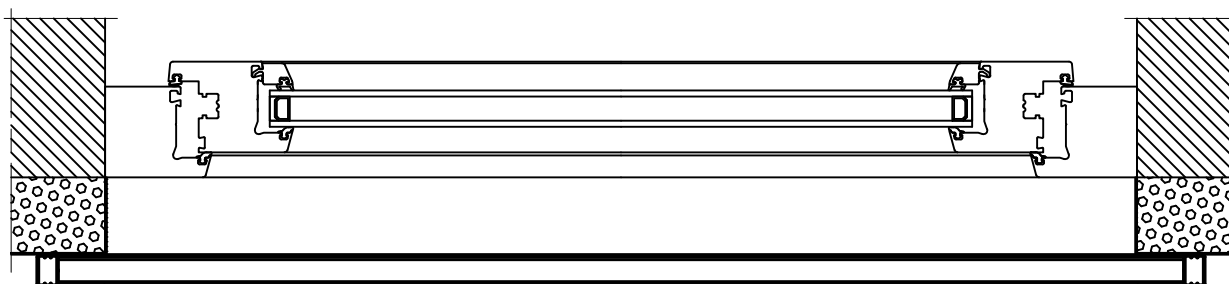


Moskitiery - przykłady zabudowy

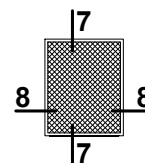


Skala 1:5

6 MPH - 04

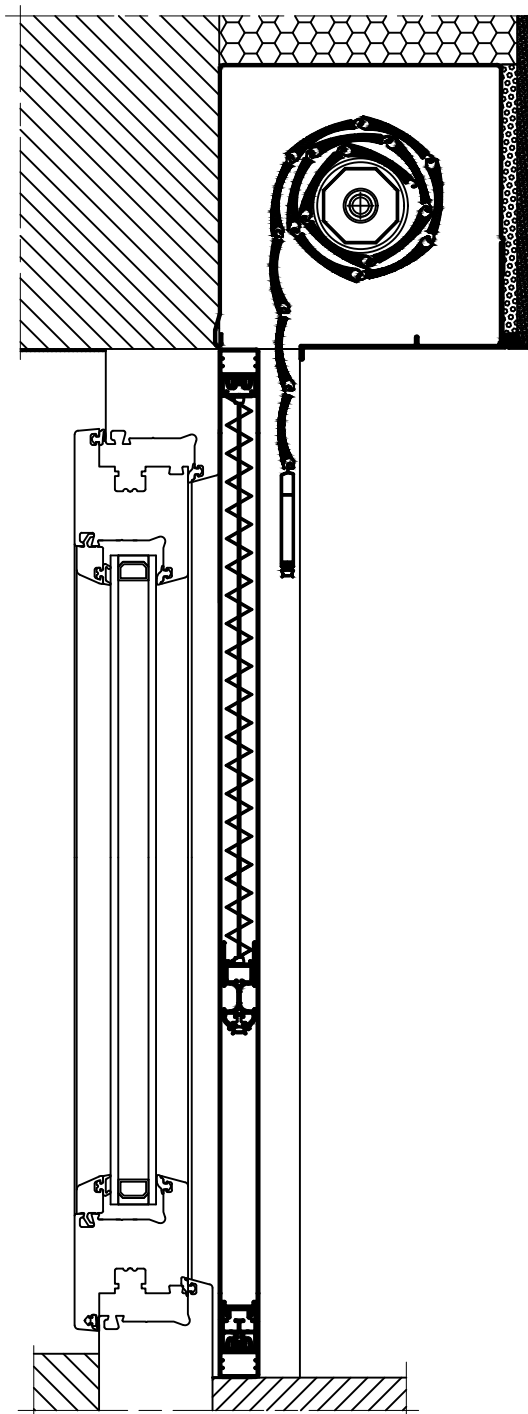


Moskitiery - przykłady zabudowy

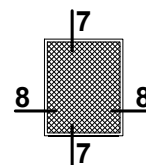


Skala 1:4

7 MPH - 05

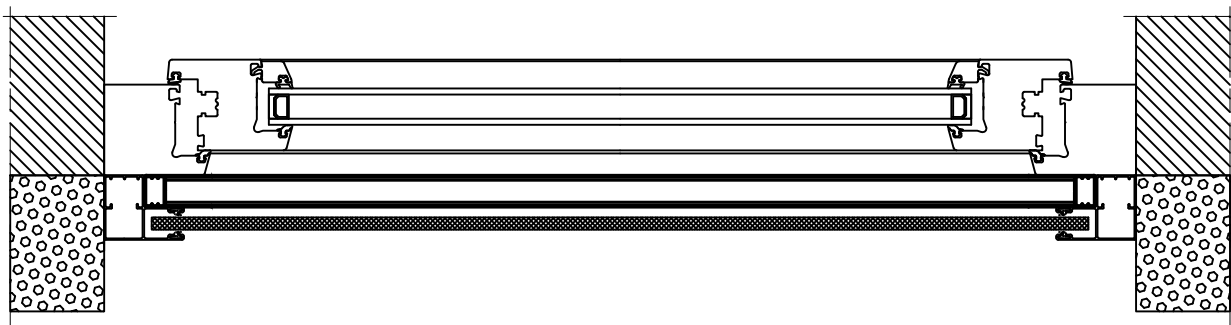


Moskitiery - przykłady zabudowy

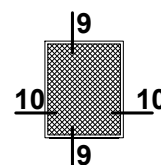


Skala 1:5

8 MPH - 05

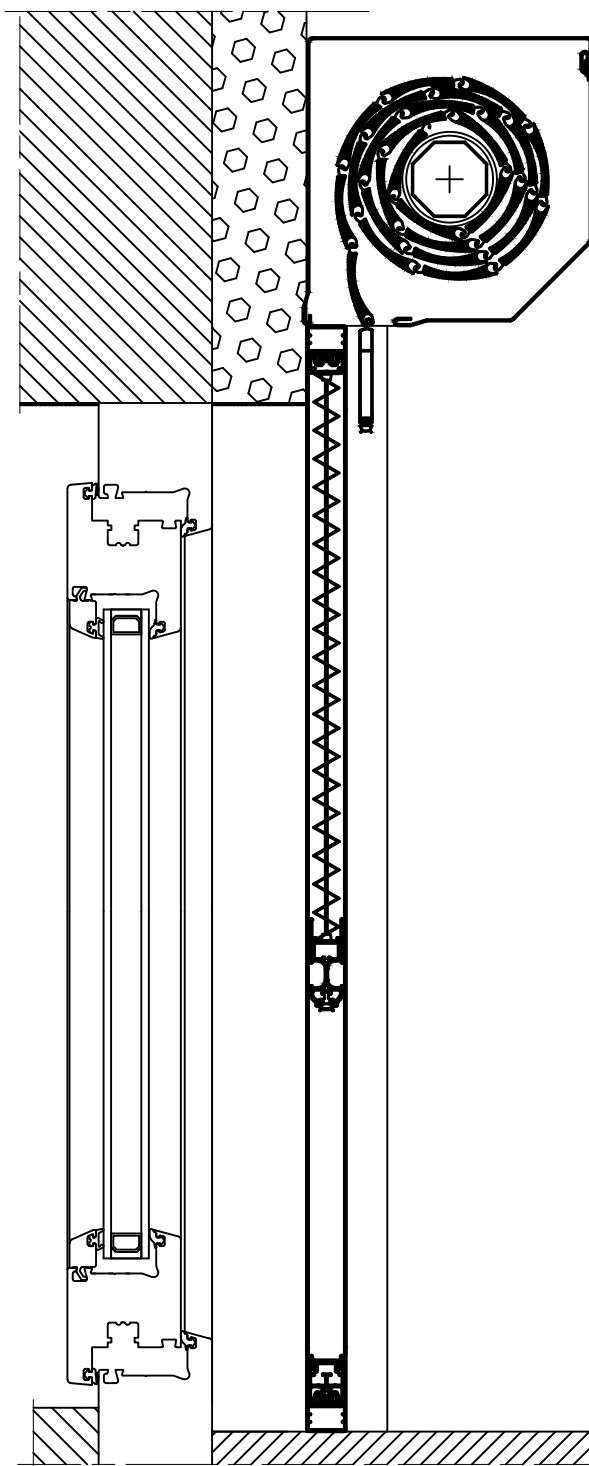


Moskitiery - przykłady zabudowy

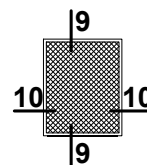


Skala 1:4

9 MPH - 06

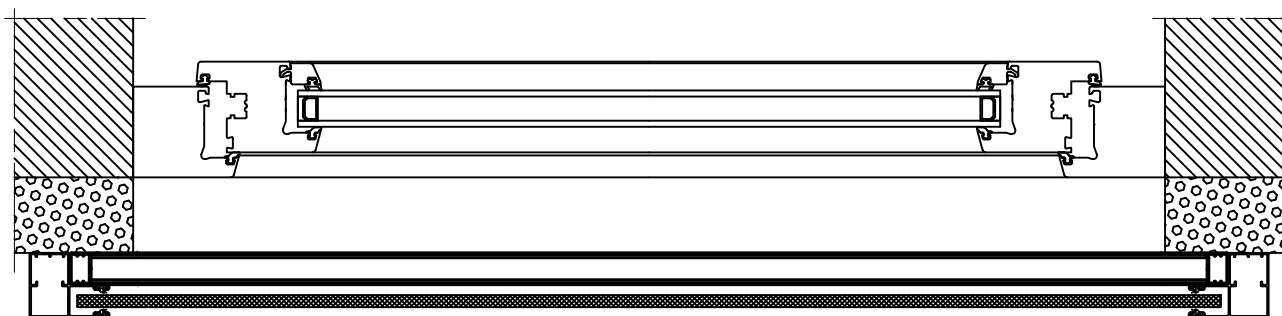


Moskitiery - przykłady zabudowy

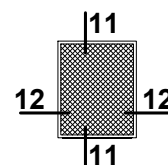


Skala 1:5

10 MPH - 06

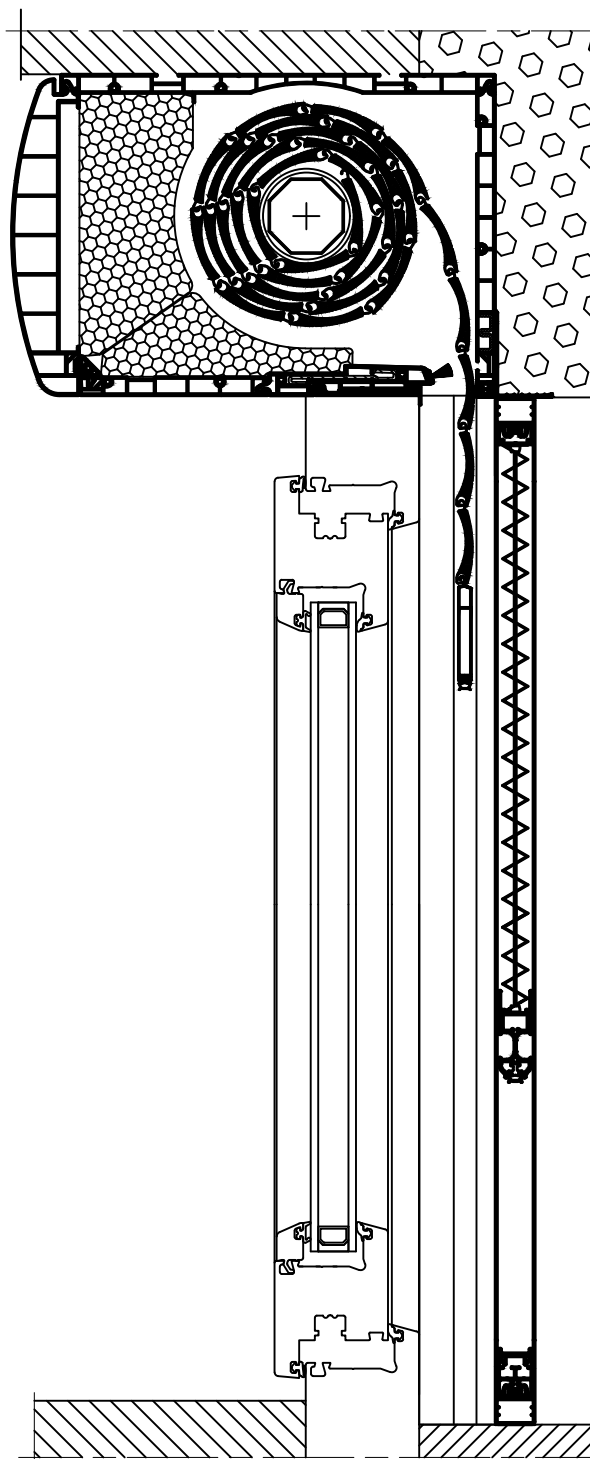


Moskitiery - przykłady zabudowy

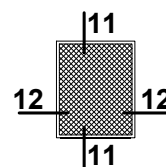


Skala 1:4

11 MPH - 07

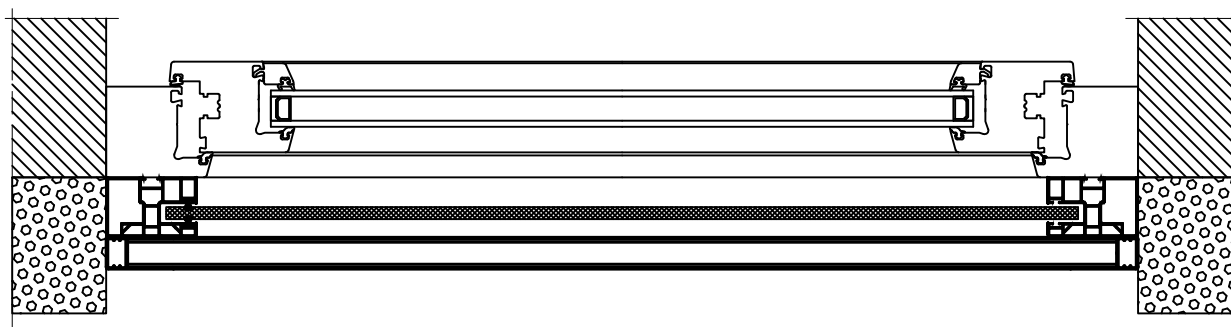


Moskitiery - przykłady zabudowy

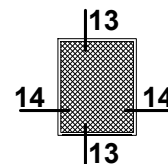


Skala 1:5

12 MPH - 07

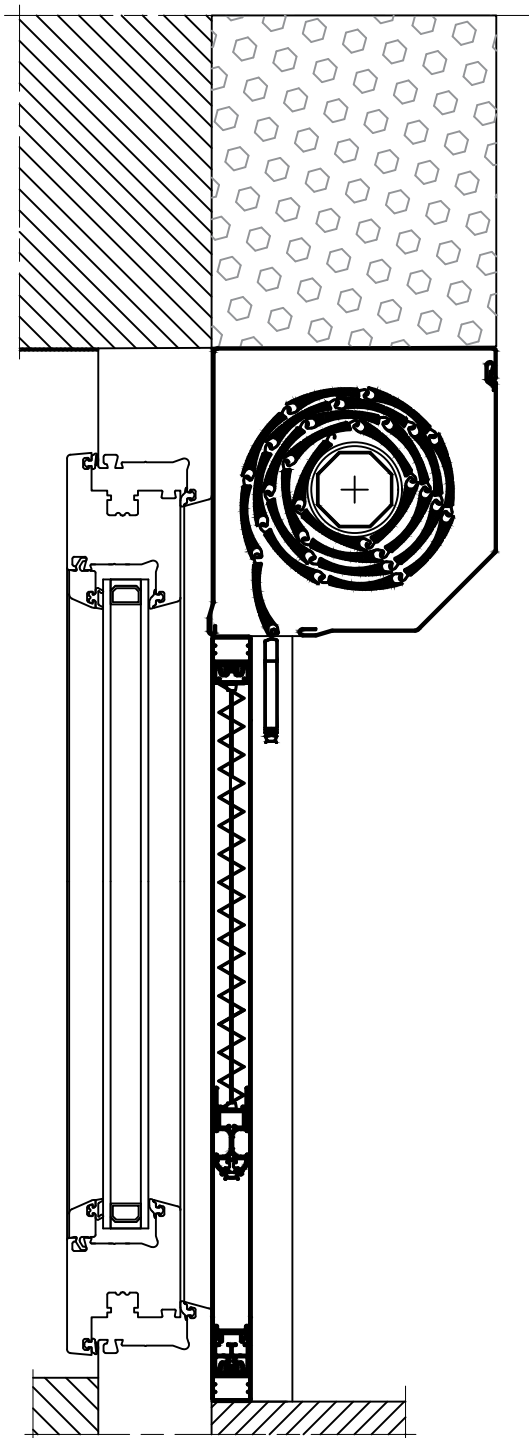


Moskitiery - przykłady zabudowy

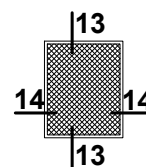


Skala 1:4

13 MPH - 08



Moskitiery - przykłady zabudowy



Skala 1:5

14 MPH - 08

