

KFV

Multi-point lock

AS 3600
AS 3600 TA
AS 3600 T4
AS 3600 T3
AS 3600 with A-opener

Window systems

Door systems

Comfort systems

Contents

1.	Introduction	4	3.2	Features of the delivery versions	9
1.1	Validity	4	3.2.1	AS 3600	9
1.2	Target group of this documentation	4	3.2.2	AS 3600 T3 safety lock	9
1.3	Intended use	4	3.2.3	AS 3600 T4 safety lock	9
1.3.1	Installation location	4	3.2.4	AS 3600 TA daytime function	10
1.3.2	Locking part and hardware	4	3.2.5	AS 3600 TA/T3 daytime function/ safety lock	10
1.4	Improper use	4	3.2.6	AS 3600 A-opener	10
1.5	Maintenance and service notes	4	4.	Operation	11
1.6	Transport	4	4.1	AS 3600 Basic functions	11
1.7	Dimensions	4	4.2	AS 3600 TA Activating/deactivating the daytime function	12
1.8	Visual indicators	4	4.3	AS 3600 T4 Activating/deactivating the safety lock	15
1.8.1	Instructions and symbols	4	4.4	AS 3600 T3 Activating/deactivating the safety lock	16
1.9	Other types of indicators	4	4.5	AS 3600 Operating the A-opener	17
1.10	Causes of damage	5	4.5.1	A-opener:	17
2.	Safety	6	5.	Cleaning and maintenance	18
2.1	Misuse	6			
3.	Overview	7			
3.1	Definition of terms	7			
3.1.1	Multi-point lock and door leaf	7			
3.1.2	Frame parts and door frame	8			

1. Introduction

Please read these operating instructions carefully before you begin the assembly work. Follow the instructions in Chapter 2 "Safety", in order to prevent personal injury or disturbance.

1.1 Validity

These instructions describe the operation of the AS 3600, AS 3600 TA and AS 3600 T4 automatic multi-point locking systems. They are applicable until they are revoked.

1.2 Target group of this documentation

This documentation is intended for use by end users. In order to guarantee the safe use of the AS 3600, AS 3600 TA and AS 3600 T4 automatic multi-point locks and prevent malfunction or damage, please read these operating instructions carefully and completely and observe the instructions specified in the chapter "Safety" in particular.

1.3 Intended use

1.3.1 Installation location

- The multi-point lock is suitable for installation in single-sash and double-sash doors in permanent buildings.
- The multi-point lock may only be installed in doors that have been fitted in a technically sound manner.
- The door design must permit use of the multi-point lock.

1.3.2 Locking part and hardware

- Repair of the multi-point lock is not permissible. If the multi-point lock is damaged, it must be replaced by KFV or repaired by a service agent authorised by KFV.
- Only KFV frame parts with Q adjustment may be used.
- The locking elements must always engage freely in the lock striker of the frame parts.

1.4 Improper use

- Do not use for escape doors.
- The multi-point lock is not designed to accommodate changes to its shape or seal which arise as a result of differences in temperature or changes to the building.
- The multi-point lock must not be used in doors for wet rooms or rooms in which the air contains aggressive or corrosive components.
- Foreign objects and/or materials which impede or prevent proper use must not be placed within the opening range, the locking system or the striker plates.
- The multi-point lock must not be interfered with and/or modified.
- Locking elements must not be misused to hold the door open.
- Movable or adjustable locking pieces (e.g. deadbolt, latch) must not be painted over.

1.5 Maintenance and service notes

- A regular annual maintenance should be carried out to check that all movable components are functioning correctly.
- The falling bolts of the auxiliary boxes must be lubricated with grease once a year. Only use oil-based PTFE spray H1 for this purpose. Do not use lubricants containing solvents or resins. All further components of the multi-point lock have already been treated with long-term lubrication and are consequently maintenance-free.
- Never use cleaning agents that are aggressive or contain solvents, as these may damage the surface of the components.

1.6 Transport

- Always transport the multi-point lock in a vertical position, whether uninstalled or installed in the door leaf.
- Use the transit supports included in the delivery for the transport of a pre-assembled door. This prevents the unlocking of falling bolts and hook bolts.
- Also block set the door leaf in the frame.
- Do not place the multi-point lock heavily on the ground when it is unpackaged, as this can damage the lock.
- Do not carry the door by the lever handle or hardware when transporting it.
- Opening/closing/locking: It must be possible to open and close the door easily. A protruding latch and /or deadbolt must not impede the opening and closing of the door.

1.7 Dimensions

All measurements are given in mm.

1.8 Visual indicators

1.8.1 Instructions and symbols



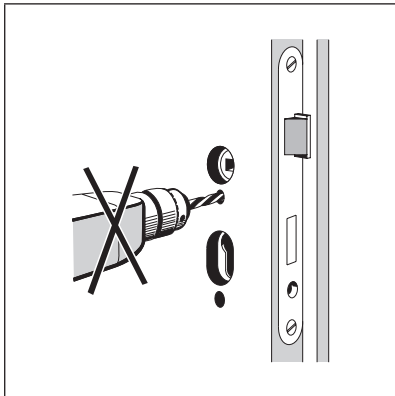
This symbol indicates special features and designates facts that require increased attention.

1.9 Other types of indicators

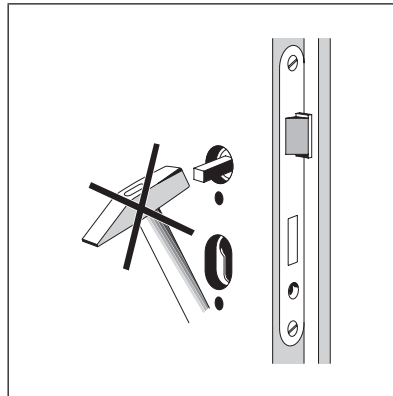
Below is a list of symbols used in these assembly instructions and their meanings:

- Items of text following this marker are found in lists.
- ▶ Items of text with this marking in front of them are instructions that must be followed in the specified order.
- " " Items of text in quotation marks are cross-references to other chapters or sections.

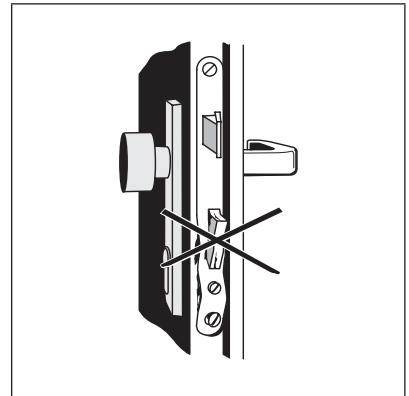
1.10 Causes of damage



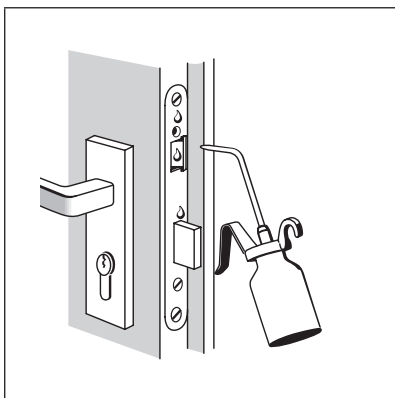
Once the lock is installed, do not drill through the door.



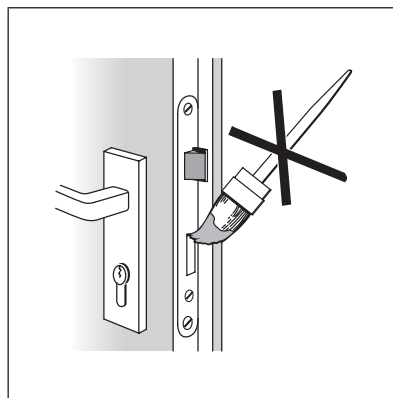
Do not install the spindle using force.



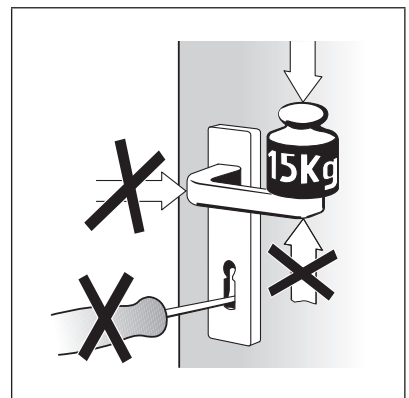
As soon as it becomes apparent that force has been used, the lock must be replaced.



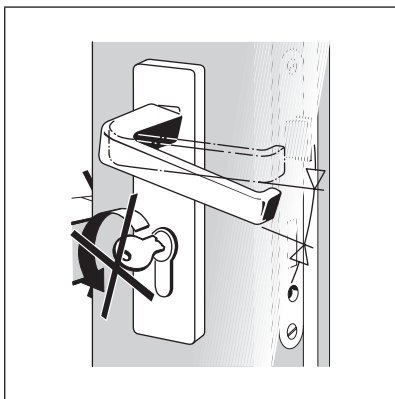
If necessary, lubricate locking elements with a spray-on lubricant.



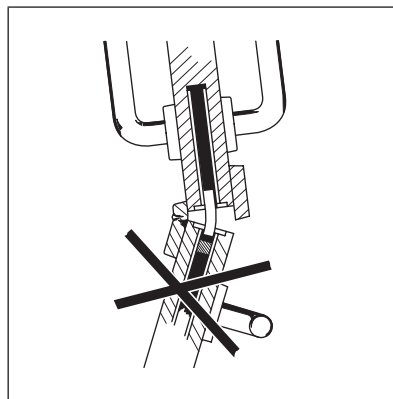
Do not paint over locking elements.



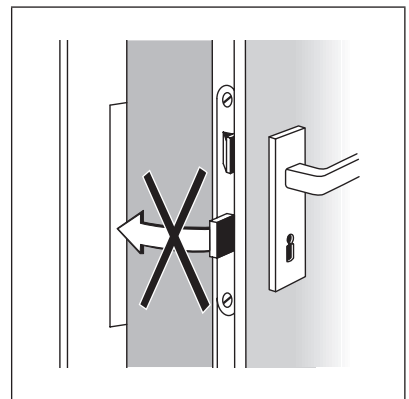
Only apply pressure to the lever handle in the direction of activation. Max. force 150 N. The lock must be locked only with the associated key.



The lever handle and key must not be operated at the same time.



Double-leaf doors must not be forced open when locked.



Locking elements must not be misused to hold the door open.

2. Safety

Before starting the operating steps, read the following safety instructions carefully. They are designed to keep you safe and prevent hazards, injuries and material losses.

2.1 Misuse

There is a risk of being locked out if the daytime function is not activated completely.

- If the door closes accidentally and the daytime function on the day latch is not activated, the main lock latch engages and keeps the door closed.
- If the door closes accidentally and the daytime function on the main lock bolt is not activated, the automatic locking mechanism is activated. The falling bolt and hook bolt move to the locking position.

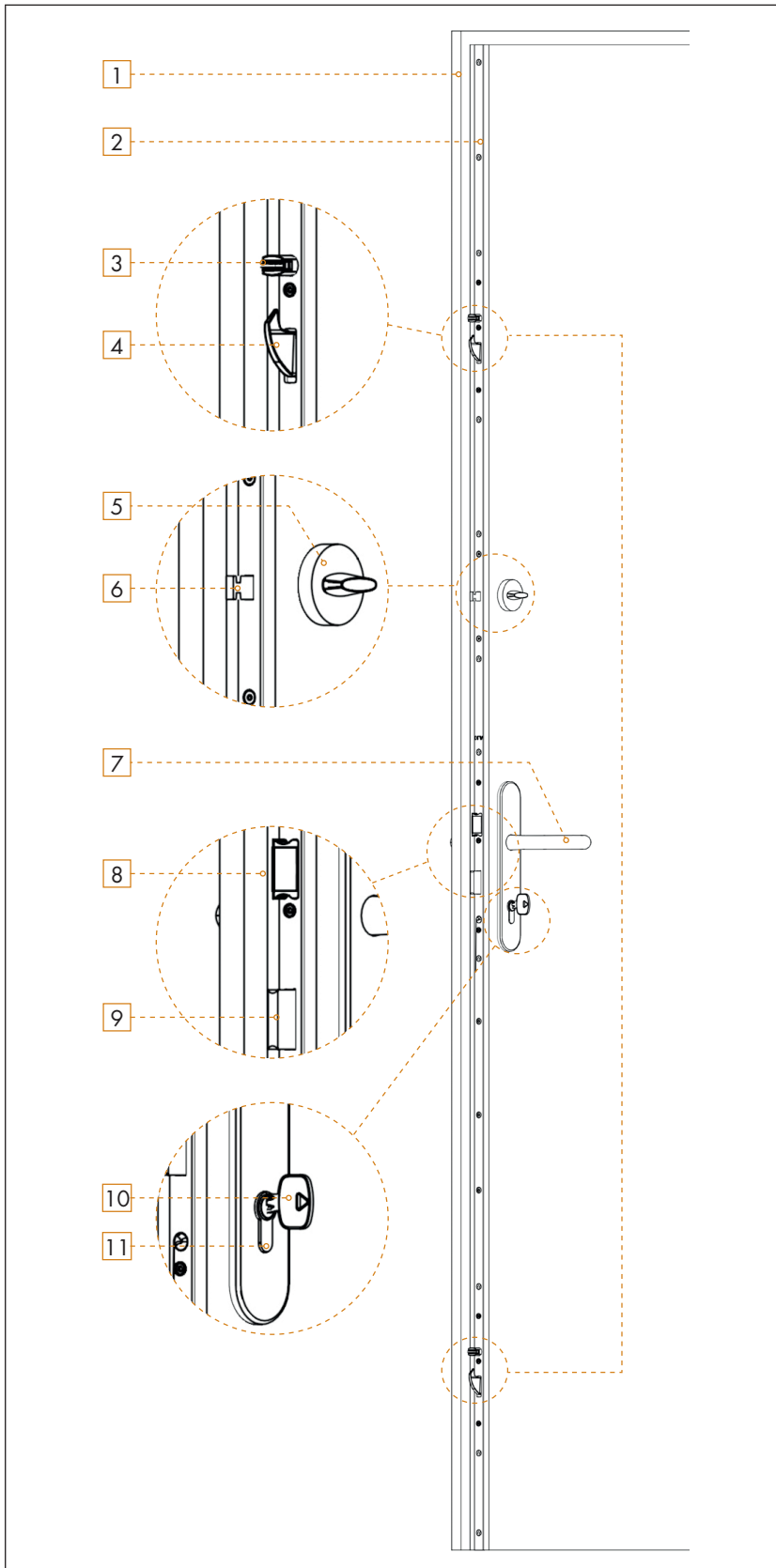
The door can then only be opened from the outside with a key in both cases!

BOTH functions must always be activated.

3. Overview

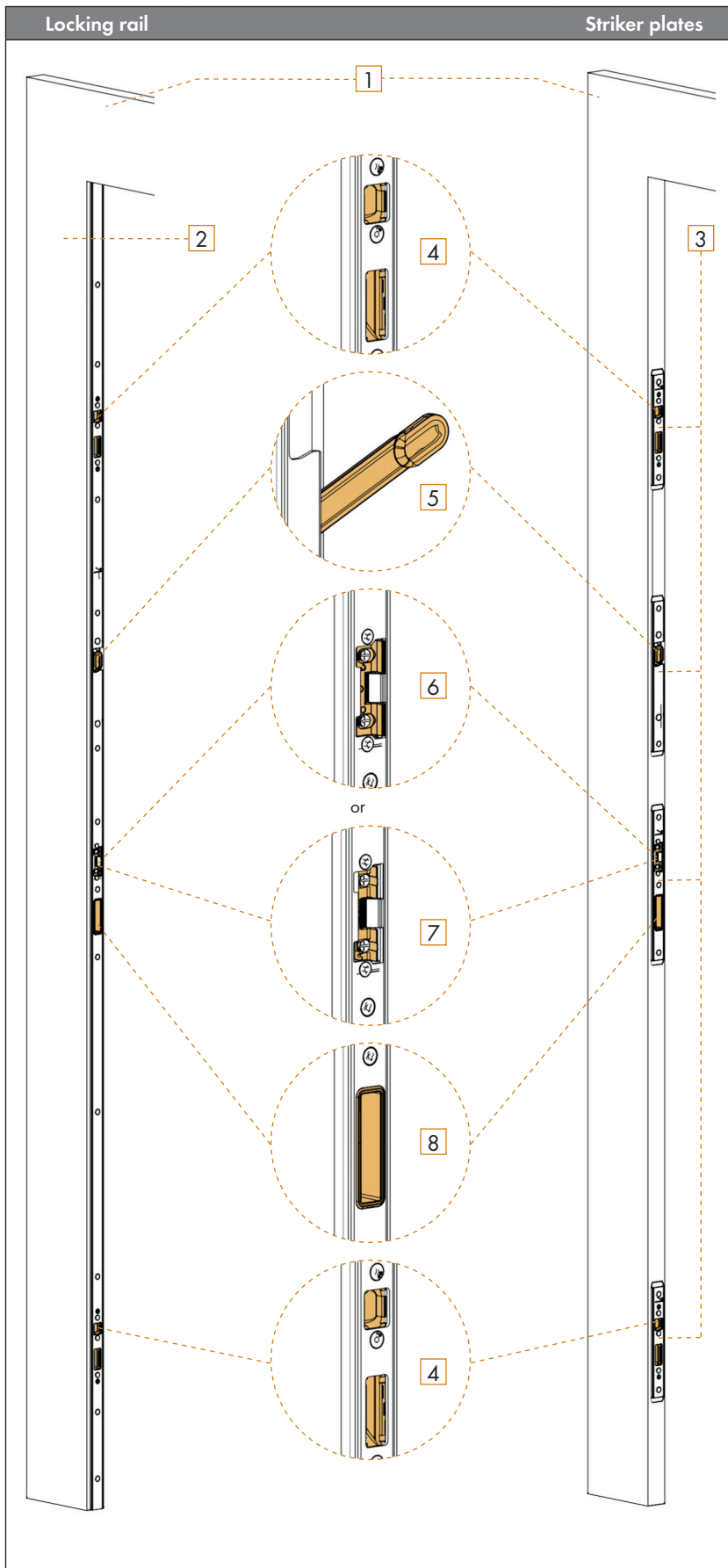
3.1 Definition of terms

3.1.1 Multi-point lock and door leaf



1	Door leaf
2	Face plate
3	Falling bolt
4	Hook bolt
5	Olive
6	Deadbolt of the safety lock
7	Lever handle
8	Main lock latch
9	Main lock bolt
10	Key
11	Profile cylinder

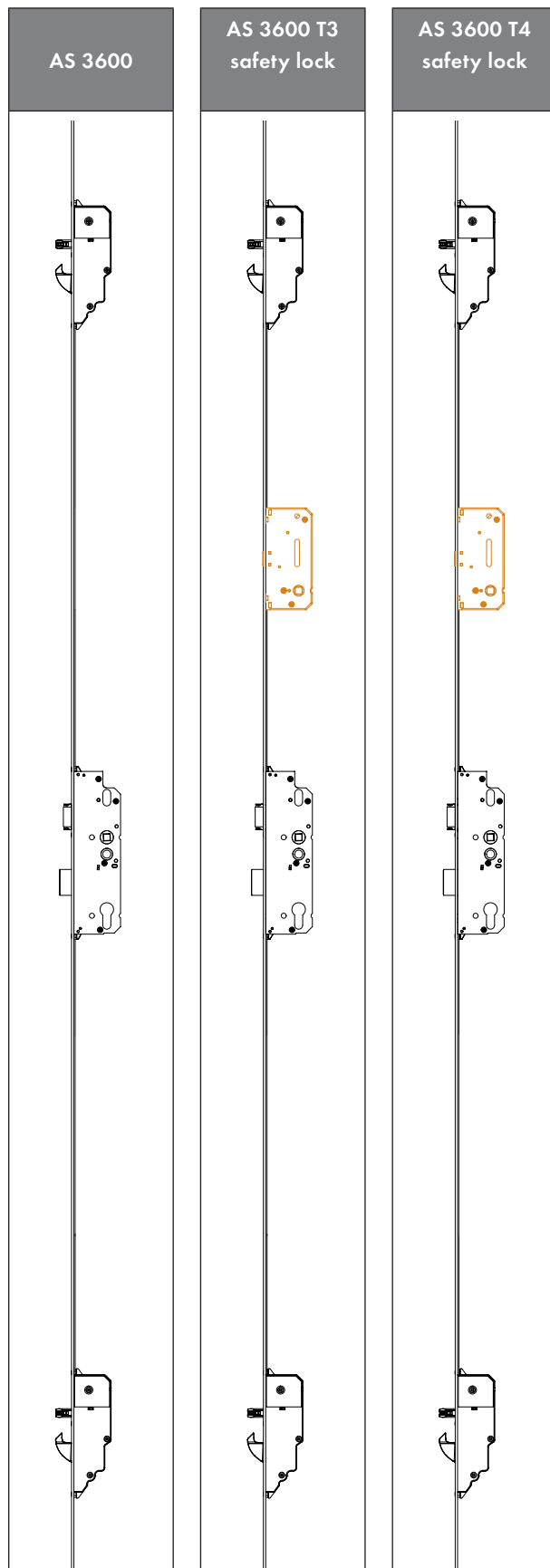
3.1.2 Frame parts and door frame



1	Door frame
2	Locking rail
3	Striker plates
4	PVC backing for falling bolt and hook bolt
5	Safety catch for the safety lock (T4/T3)
6	AT piece
7	Day latch for TA daytime function
8	PVC backing for the main lock bolt

3.2 Features of the delivery versions

The AS 3600 automatic multi-point locking system is available in the following versions:



3.2.1 AS 3600

The AS 3600 automatic multi-point locking system locks automatically when the door is closed. The two locking elements of the auxiliary box (hook bolt and falling bolt) move to the locking position.

3.2.2 AS 3600 T3 safety lock

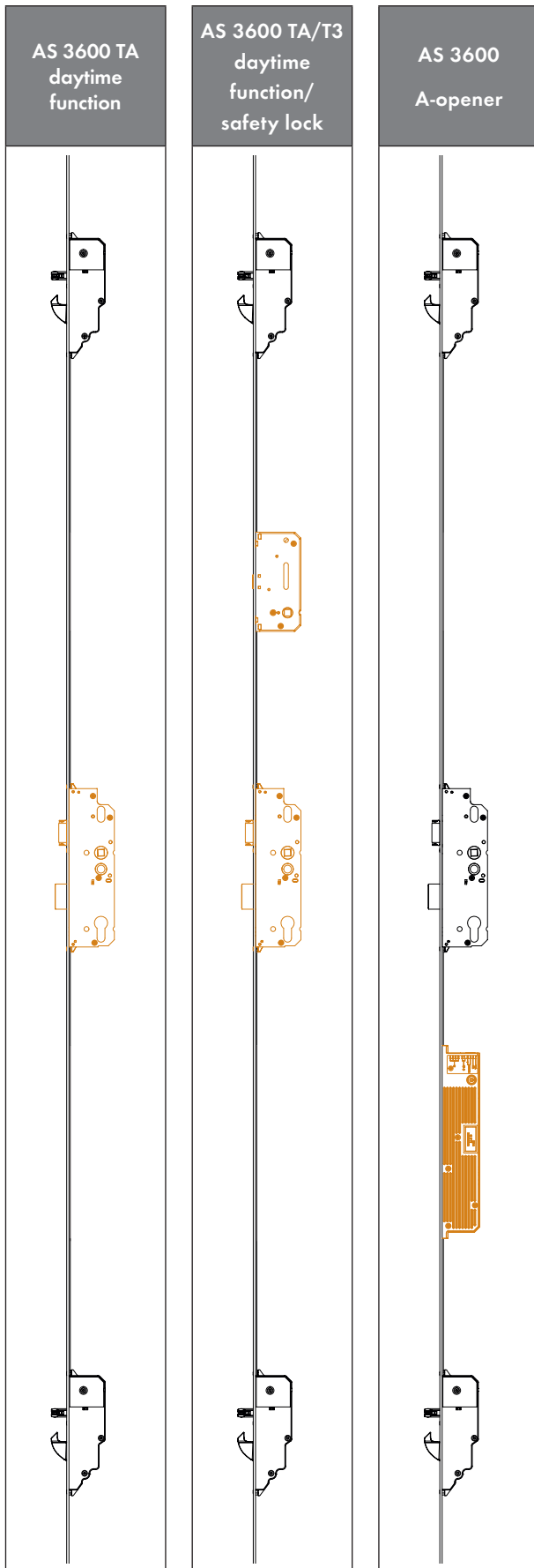
The AS 3600 T3 automatic multi-point locking system is equipped with the T3 safety lock.

- The T3 safety lock restricts the opening gap of the door.
- The T3 safety lock can be locked and released from the inside via the olive.

3.2.3 AS 3600 T4 safety lock

The AS 3600 T4 automatic multi-point locking system is equipped with the T4 safety lock.

- The T4 safety lock restricts the opening gap of the door.
- The T4 safety lock can be locked and released from the inside via the olive.
- The T4 safety lock can be released from the inside or outside using a key.



3.2.4 AS 3600 TA daytime function

The AS 3600 TA automatic multi-point locking system is equipped with the daytime function. The daytime function enables the door to be opened without the use of a key.

- When the daytime function is activated, the locking elements of the auxiliary box (falling bolt and hook bolt) are fixed in the release position.
- The door is only held by the main lock latch on the day latch. The day latch can pivot back when the daytime function is activated. The main lock latch is released by pushing against the door in the opening direction.

3.2.5 AS 3600 TA/T3 daytime function/ safety lock

The AS 3600 TA/T3 automatic multi-point locking system combines the TA daytime function and T3 safety lock.

3.2.6 AS 3600 A-opener

The AS 3600 automatic multi-point locking system A-opener is equipped with the electromechanical release function.

The hook bolts and falling bolts of the auxiliary box and the main lock latch are retracted during electromechanical opening. The deadbolt in the main lock is not locked in this opening procedure.



An electromechanical opening is not possible if the main lock bolt is excluded.

Enables connection to an intercom system or access control system.

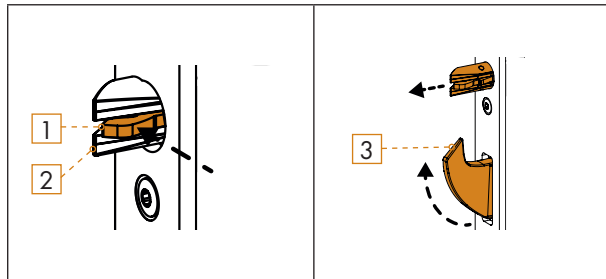
4. Operation

The operation of the AS 3600 automatic multi-point locking system is described below. The basic function is common to all versions: AS 3600, AS 3600 TA and AS 3600 T4 and the retrofit combinations T3 and A-opener.



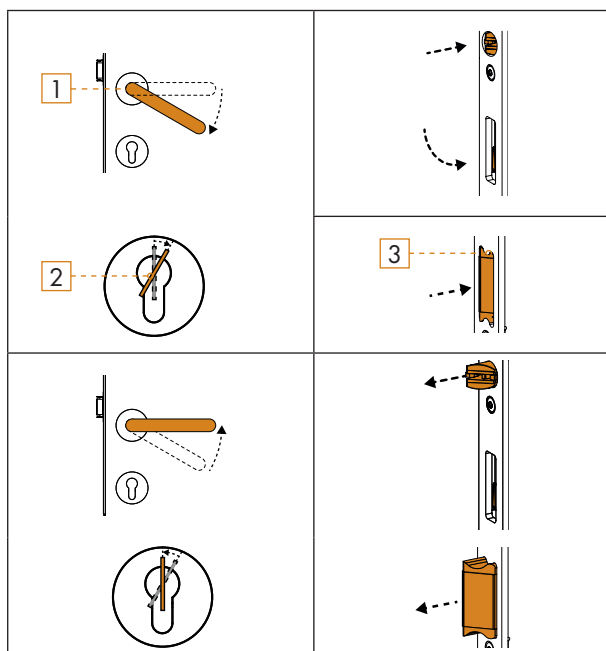
If functional disorder occurs during operation, please contact your contractual partner and have the multi-point lock checked and serviced if need be.

4.1 AS 3600 Basic functions



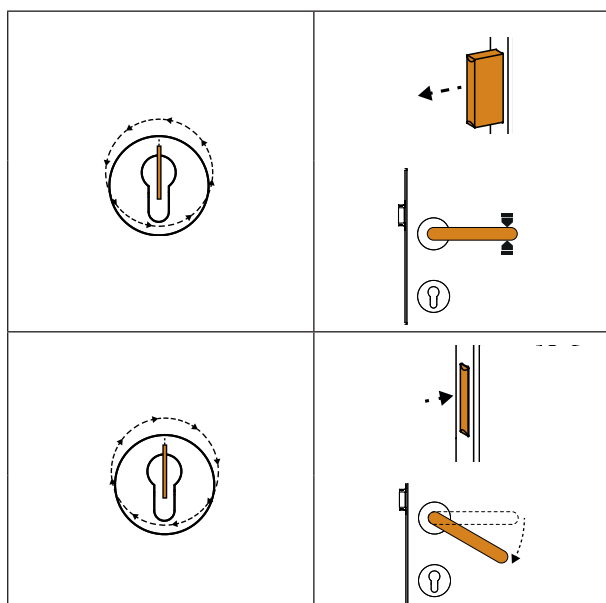
Automatic locking mechanism:

- ▶ Shut the door.
- The triggers [1] of the falling bolt [2] are pressed inwards on contact with the frame part.
- Falling bolt and hook bolt [3] move automatically to the locking position.
- The main lock latch engages in the frame part.



Open:

- ▶ Activate the lever handle [1] or turn the key [2] in the direction of release.
- The falling bolt, hook bolt and main lock latch [3] retract when the lever handle is activated or when the key is turned to the release position.



Activating the child-proof lock:

- ▶ Turn the key once in the locking direction.
- The main lock bolt extends.
- The lever handle is blocked when the main lock bolt is in the locking position. The door cannot be opened without a key.
- ▶ Turn the key once in the release direction.
- The main lock bolt retracts.
- The lever handle is released when the main lock bolt is in the release position.

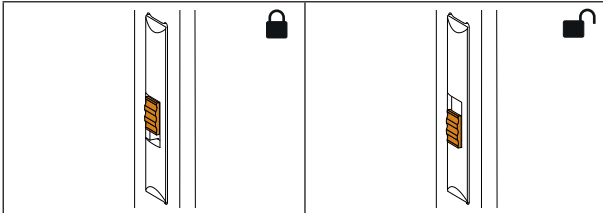
4.2 AS 3600 TA Activating/deactivating the daytime function

The daytime function enables the door to be opened from the outside without the use of a key. When the daytime function is activated, the locking elements of the auxiliary box (falling bolt and hook bolt) are retracted. The door is only held by the main lock latch on the day latch. When the daytime function is activated, the day latch pivots back when there is pressure against the door in the opening direction and releases the main lock latch.

Two adjustments must be made to activate/deactivate the daytime function:

- In the door leaf on the main lock bolt:

There is a sliding handle on the front side of the main lock bolt, by which the daytime release of the auxiliary box can be activated or deactivated. If the daytime release is activated, the falling bolts are blocked in the retracted position.

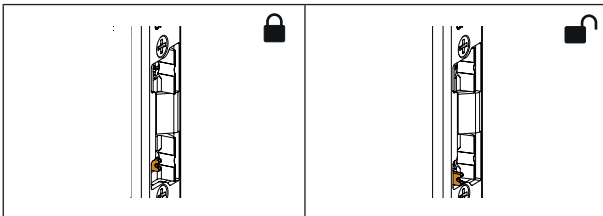


The main lock bolt is marked with two lock symbols:

- Sliding handle up = daytime function deactivated
- Sliding handle down = daytime function activated

- In the door frame on the day latch:

There is also a sliding handle on the day latch, this blocks or releases the day latch.



- Sliding handle inside = daytime function deactivated
- Sliding handle outside = daytime function activated



NOTE!

There is a risk of being locked out if the daytime function is not activated completely.

- If the door closes accidentally and the daytime function on the day latch is not activated, the main lock latch engages and keeps the door closed.
- If the door closes accidentally and the daytime function on the main lock bolt is not activated, the falling bolt and the hook bolt move to the locking position.

The door can then only be opened from the outside with a key in both cases!

Both functions must always be activated.

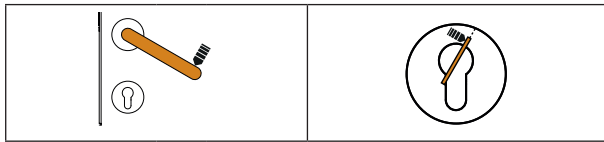


NOTE!

Never close the main lock bolt in the locking position when the daytime function is activated.

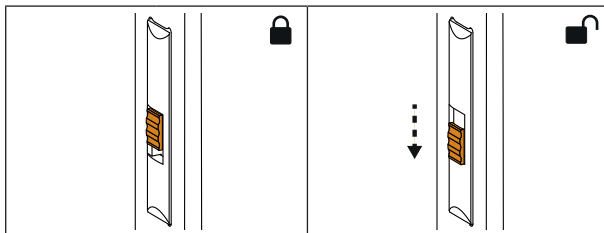
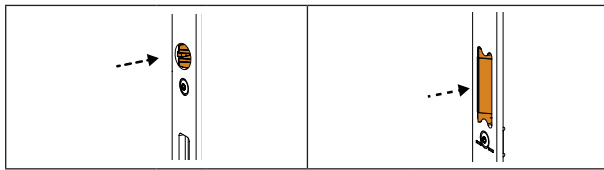
- The daytime function will be deactivated in an improper manner if the main lock bolt is closed in the locking position with the daytime function activated. This will lead to premature wear and tear.

The daytime release must be deactivated before the main lock bolt can be closed in the locking position. The right procedure for deactivating the daytime release is described below.

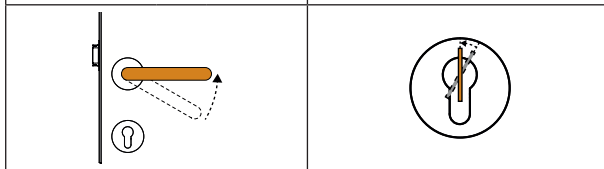


Activating the daytime function:

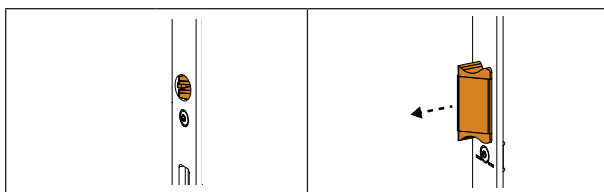
- ▶ Open the door.
- ▶ Activate and hold the lever handle or turn the key to the release position and hold.
 - The falling bolt and main lock latch retract.



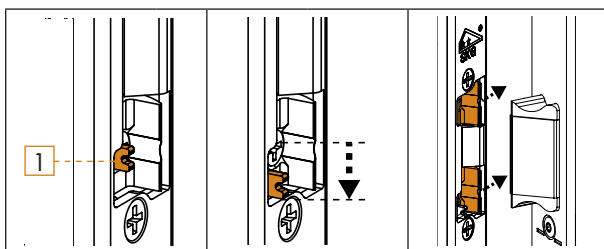
- ▶ Move the sliding handle in the main lock bolt downwards.



- ▶ Release the lever handle or turn the key to the withdrawal position.



- The falling bolts remain retracted meaning that the automatic locking mechanism is not triggered by closing the door.
- The main lock latch extends again.

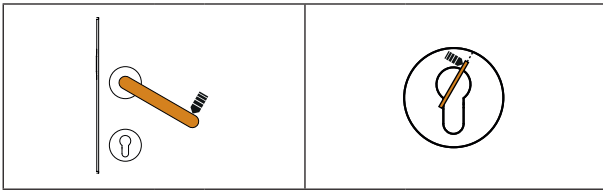


Release of the day latch on the frame side

- Move the sliding handle [1] from the inside to the outside.

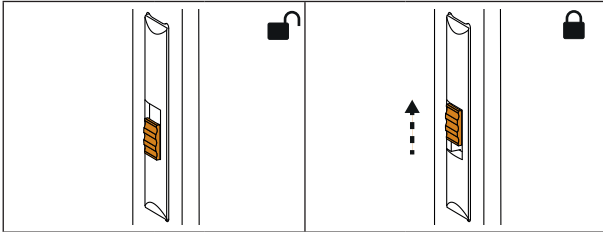
The daytime function is activated:

- The falling bolts are retracted. The automatic locking mechanism is not triggered when the door is closed.
- The day latch is released. The day latch pivots back in case of pressure against the door in the opening direction and releases the main lock latch.
- The door can be opened without a key.



Deactivating the daytime function:

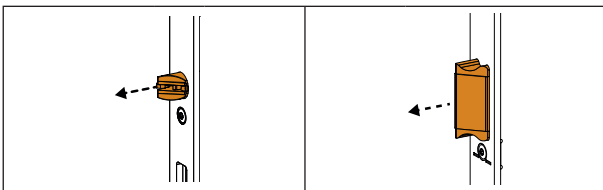
- ▶ Open the door.
- ▶ Activate and hold the lever handle or turn the key to the release position and hold.



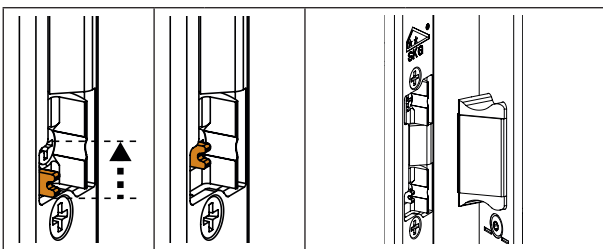
- ▶ Move the sliding handle in the main lock bolt upwards.



- ▶ Release the lever handle or turn the key to the withdrawal position.



- The falling bolts move to the trigger position.
- The main lock latch extends.



Locking the day latch on the frame side

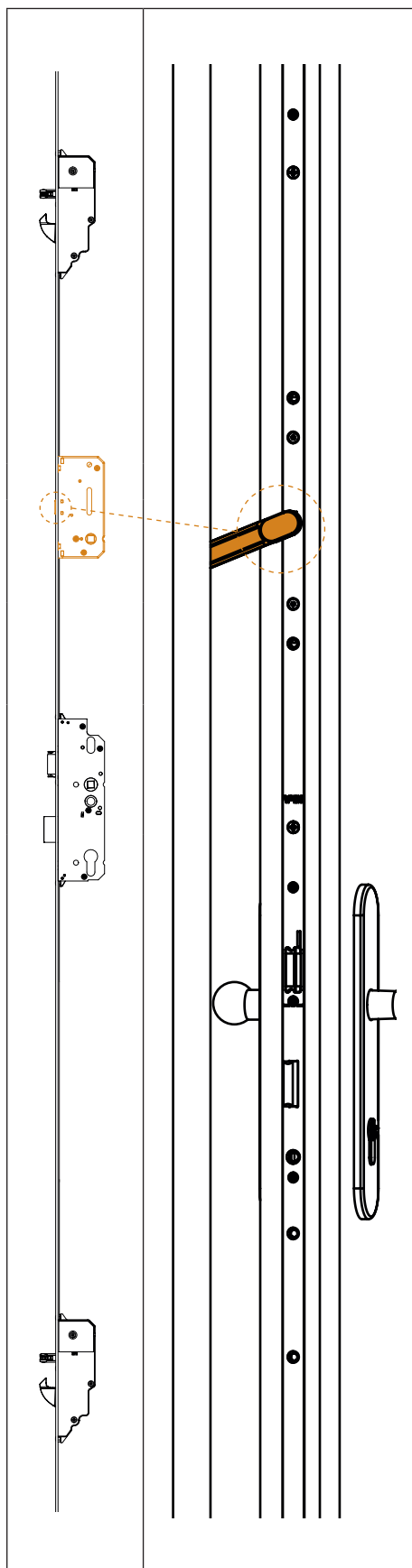
- Move the sliding handle [1] from the outside to the inside.

The daytime function is deactivated.:

- The falling bolts are in the trigger position. The automatic locking mechanism is triggered when the door is closed.
- The day latch is locked. The main lock latch is held by the day latch by pushing against the door in the opening direction.

4.3 AS 3600 T4 Activating/deactivating the safety lock

The AS 3600 T4 automatic multi-point locking system is equipped with a safety lock.



The T4 safety lock restricts the opening gap of the door. The T4 safety lock can be locked and released from the inside via the olive and can be released with the key via the profile cylinder.

Locking the T4 safety lock

- ▶ Shut the door.
- ▶ Turn the olive 90° in the locking direction.

The deadbolt moves to the locking position and engages into the safety catch .

If the door is opened, the safety catch restricts the opening gap of the door.

Release the T4 safety lock

- ▶ Shut the door.
- ▶ Turn the olive 90° in the release direction.

The deadbolt moves to the release position and releases the safety catch .

The door can be opened fully.

Release the T4 safety lock with the key.

The main lock bolt must move to the locking position once to release the T4 safety lock via the profile cylinder.

If the main lock bolt is in the release position, the key must be turned once in the locking position.

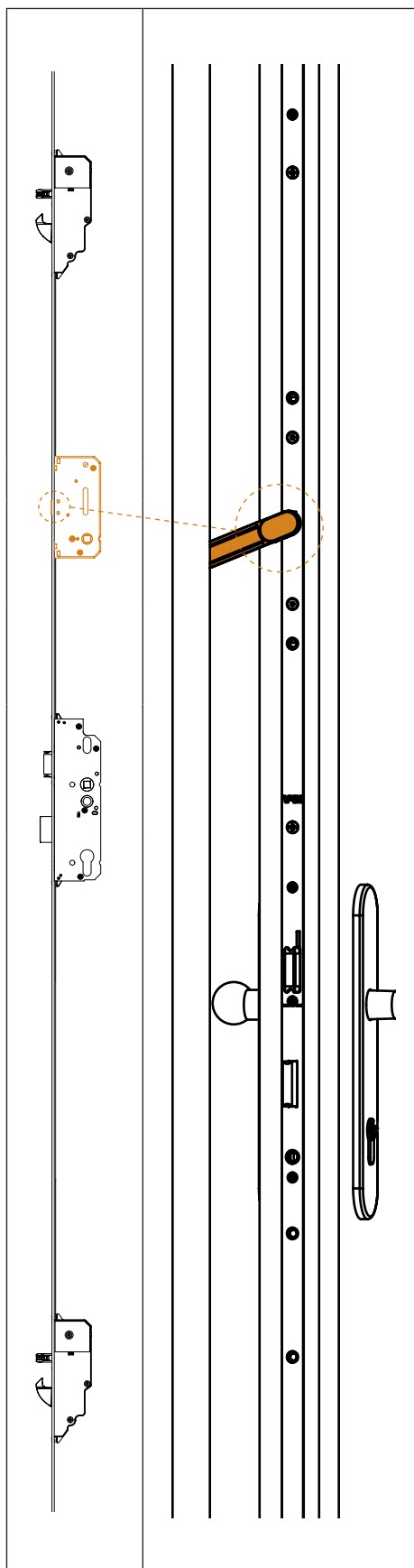
- The deadbolt of the T4 safety lock jumps in the release position, then turn the key once in the release position. The door can be opened fully once again.

If the main lock bolt is in the locking position, the key must be turned once in the release position and then once in the locking position.

- The deadbolt of the T4 safety lock jumps in the release position, then turn the key once in the release position. The door can be opened fully.

4.4 AS 3600 T3 Activating/deactivating the safety lock

The AS 3600 T3 automatic multi-point locking system is equipped with a safety lock.



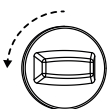
The T3 safety lock restricts the opening gap of the door. The T3 safety lock can be locked and released from the inside only via the olive.

Locking the T3 safety lock

- ▶ Shut the door.
- ▶ Turn the olive 90° in the locking direction.

The deadbolt moves to the locking position and engages into the safety catch .

If the door is opened, the safety catch restricts the opening gap of the door.

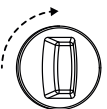


Release the T3 safety lock

- ▶ Shut the door.
- ▶ Turn the olive 90° in the release direction.

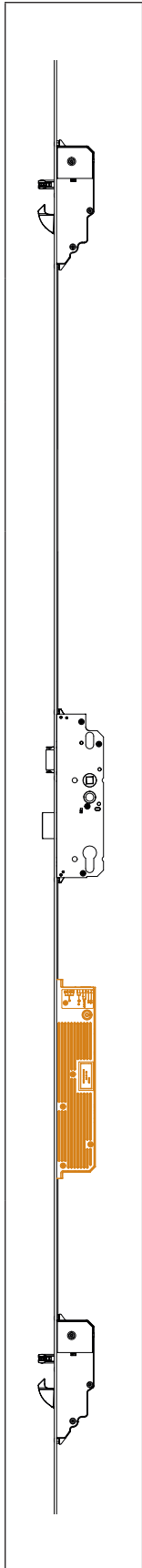
The deadbolt moves to the release position and releases the safety catch .

The door can be opened fully once again.



4.5 AS 3600 Operating the A-opener

The AS 3600 automatic multi-point locking system A-opener releases electro-mechanically.



4.5.1 A-opener:

The AS 3600 automatic multi-point locking system A-opener can be upgraded to an electromechanical multi-point lock with the A-opener motor.

- Automatic mechanical locking
- Electromechanical release

The hook bolts and falling bolts of the auxiliary box and the main lock latch are retracted during electromechanical opening. The deadbolt in the main lock is not locked in this opening procedure.

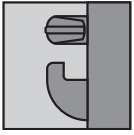


An electromechanical opening is not possible if the main lock bolt is excluded.

Enables connection to an intercom system or access control system.

5. Cleaning and maintenance

for KfV multi-point locks, series AS 3xxx




Cleaning


- Use a soft cloth for the cleaning.
- Never use cleaning agents that are aggressive or contain solvents.

Functional test and maintenance

Check that all moving components are functioning properly once a year.




Please get in touch with your contractual partner if you notice functional disorder or damage. Repairs may only be carried out by specialists trained and certified for KfV products.



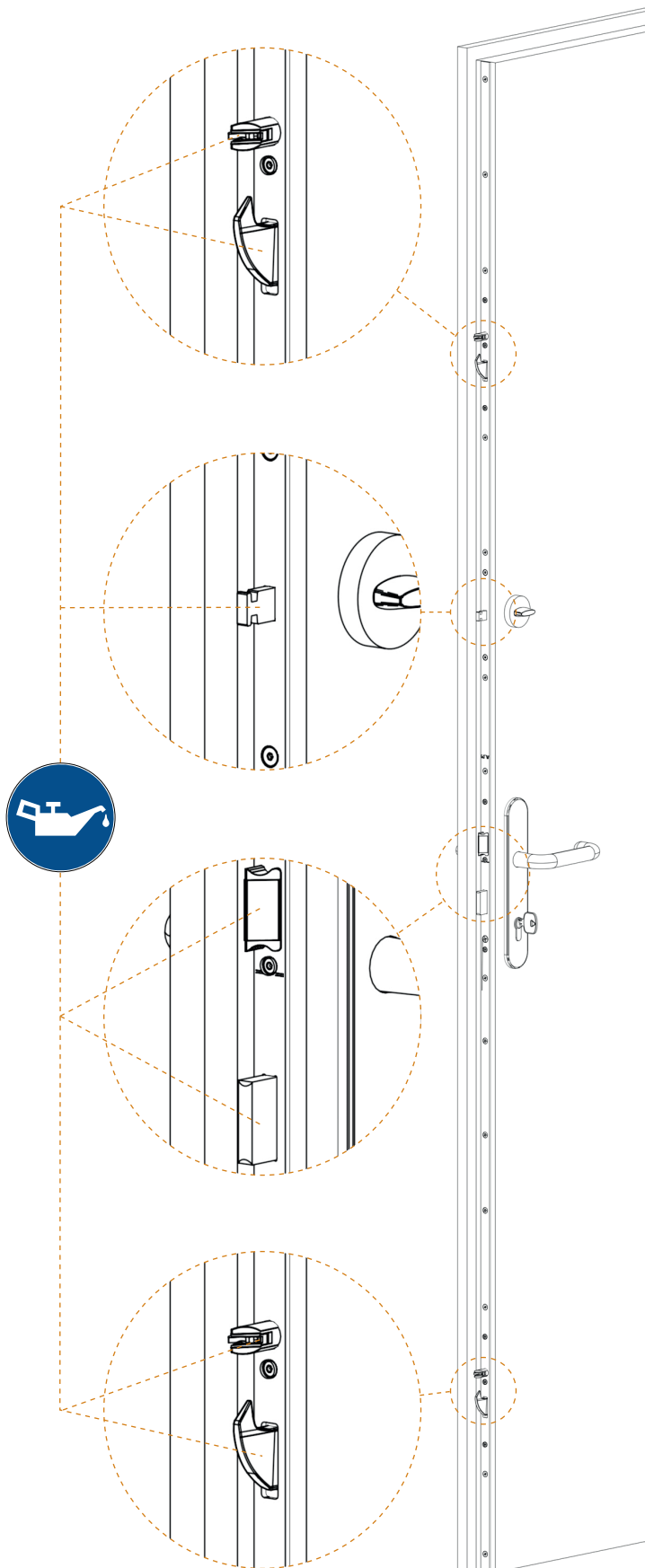
Lubricate the falling bolt once a year.

- Only use oil-based PTFE spray H1 for this purpose.
- Do not use lubricants containing solvents or resins.

All further components of the multi-point lock have already been treated with long-term lubrication and are consequently maintenance-free. However, if lubrication of other locking elements is necessary, please spray the elements likewise with oil-based PTFE spray H1.



You can find further information concerning the warranty in our general terms and conditions of business (AGB), to download at:
www.siegenia.com



SIEGENIA[®]

brings spaces to life

A company of the SIEGENIA GROUP
KFV Karl Fliether GmbH & Co. KG
Siemensstraße 10
42551 Velbert
GERMANY

Phone: +49 2051 278-0
Fax: +49 2051 278-167
info@siegenia.com
www.siegenia.com



You can find address details for our international sites at: www.siegenia.com

SIEGENIA worldwide:

Austria Phone: +43 6225 8301

Belarus Phone: +375 17 3143988

Benelux Phone: +31 85 4861080

China Phone: +86 316 5998198

France Phone: +33 3 89618131

Germany Phone: +49 271 39310

Great Britain Phone: +44 2476 622000

Hungary Phone: +36 76 500810

Italy Phone: +39 02 9353601

Poland Phone: +48 77 4477700

Russia Phone: +7 495 7211762

South Korea Phone: +82 31 7985590

Switzerland Phone: +41 33 3461010

Turkey Phone: +90 216 5934151

Ukraine Phone: +38 044 4054969

Contact your dealer: